

Polyester Filter Bag Specifications

We have polyester and high temperature resistance filter sleeve/filter bags
needle felt, punch felt, singe, calendaring, heat setting
Types: Anti-static, water&oil resistance, PTFE membrane



Polyester

500gsm , 550gsm

Polyester Multifilament Yarn



Polyester
500gsm , 550gsm
Polyester Spun Yarn



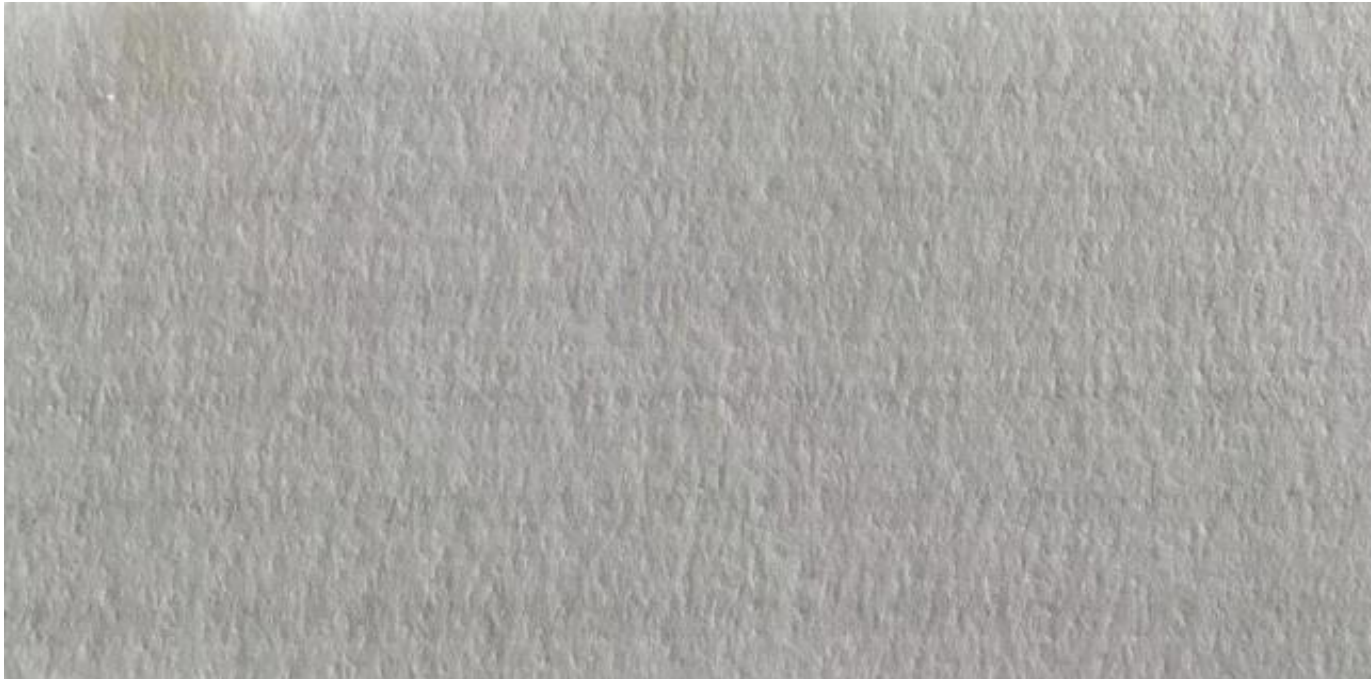
Polyester
500gsm , 550gsm
Water&oil repellent



Polyester

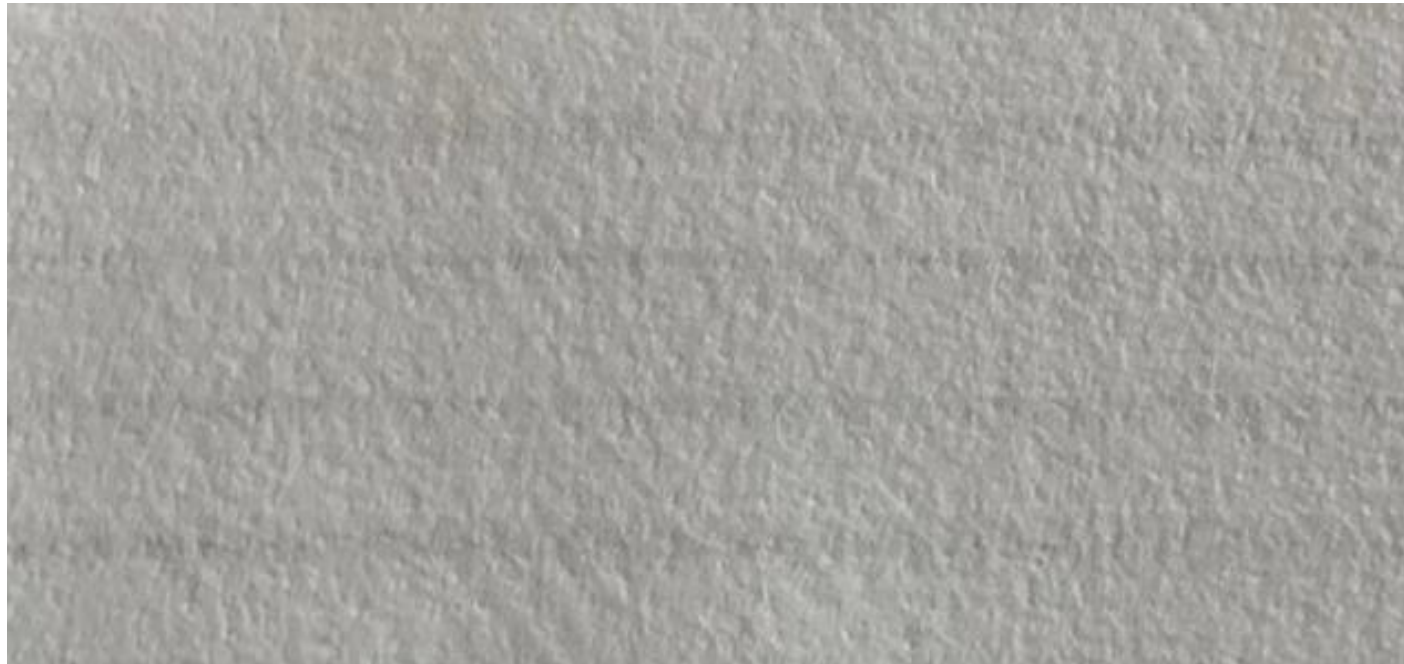
500gsm , 550gsm

Anti static and water&oil repellent



Polyester

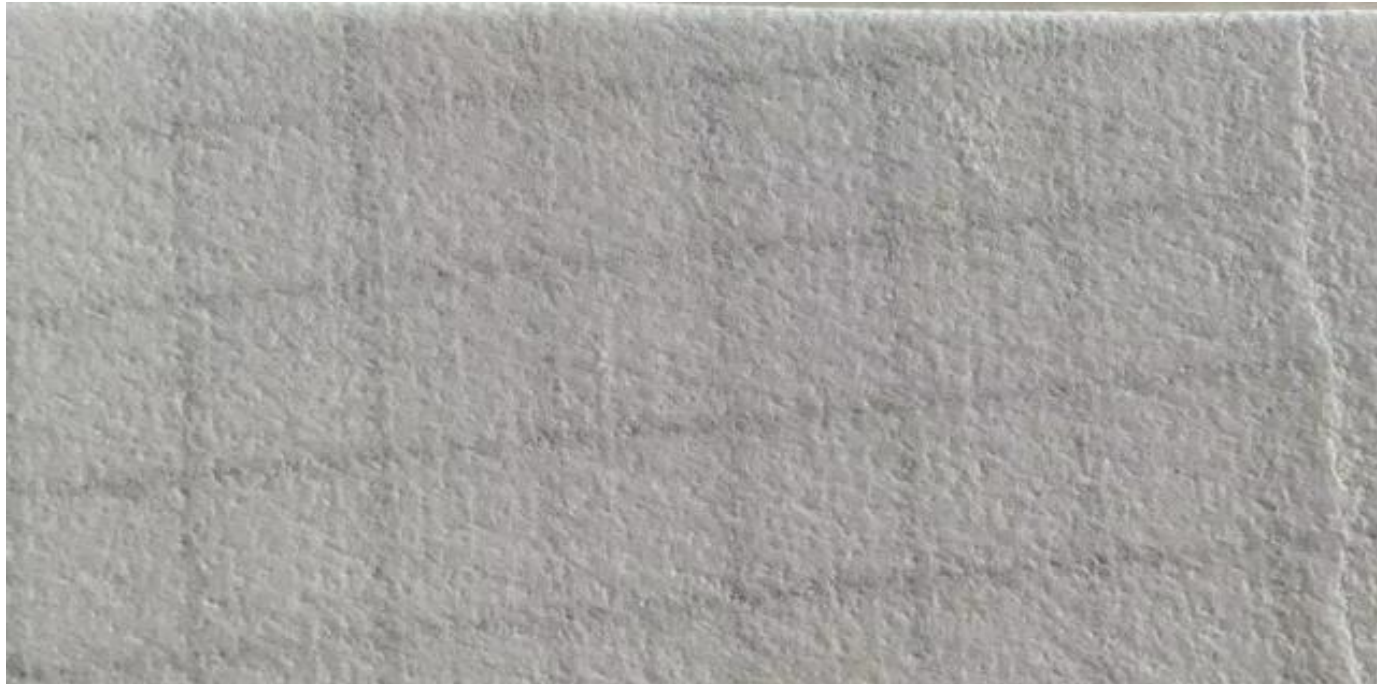
500gsm , 550gsm
Anti static, strip shape



Polyester

500gsm , 550gsm

Anti static, shape



Polyester

500gsm , 550gsm

Polyester Carbon Fiber

Anti-static with water & oil repellent



Polyester

500gsm , 550gsm

PTFE membrane



High Temperature Filter Bag Specifications



AC500 550gsm Acrylic

Product name	100% Acrylic	
Product Code	ES-Acrylic	
Physical properties		
Fiber	100% Acrylic	
Scrim	Acrylic spun yarn	
Weight	g/m ²	550gsm
Thickness	mm	2.0-2.2
Width	m	≤2,2
Finish treatment	Singeing, Calendering, Heat setting	
Air permeability	l / m ² / s @200pa	200 ~ 350
Tensile strength	Warp	>700
	Weft	>800
Tensile elongation	Warp	20
	Weft	30
Temperature		
Continuous temperature	C°	120
Instant temperature	C°	140
Heat Shrinkage 240° %	3	
Anti-acid	Good	
Anti-alkali	Good	
Anti-abrasion	Good	
Hydrolysis stability	Good	

1) Nomex needle-felt 500g/m² with water&oil repellent

Product name	Aramid/Nomex needle felt 500g/m ² with water&oil repellent	
Product Code	ES-WRAMD500N	
Physical properties		
Fiber	Aramid staple fiber	
Scrim	Aramid staple yarn	
Weight	g/m ²	500
Thickness	mm	2.0-2.2
Width	m	≤2,2
Finish treatment	Singeing, Calendering, Heat setting, water& oil proof treatment	
Air permeability	l / m ² / s @200pa	200 ~ 250
Tensile strength	Warp	800
	Weft	1100
Tensile elongation	Warp	20
	Weft	30
Temperature		
Continuos temperature	C°	200
Instant temperature	C°	240
Heat Shrinkage 240° %	1.5	
Anti-acid	Good	
Anti-alkali	Good	
Anti-abrasion	Excellent	
Hydrolysis stability	Good	

Nomex needle-felt 500g/m2 with water&oil repellent



2) Nomex needle-felt 550g/m² with PTFE membrane

Product name	Aramid/Nomex needle felt 550g/m ² with PTFE membrane	
Product Code	ES-AMD550M	
Physical properties		
Fiber	Aramid staple fiber	
Scrim	Aramid staple yarn	
Weight	g/m ²	550
Thickness	mm	2.0
Width	m	≤2,2
Finish treatment	Singeing, Calendering, Heat setting, PTFE membrane	
Air permeability	l / m ² / s @200pa	30 ~ 80
Tensile strength	Warp	800
	Weft	900
Tensile elongation	Warp	20
	Weft	30
Temperature		
Continuos temperature	C°	204
Instant temperature	C°	240
Chemical Properties		
Anti-acid	Good	
Anti-alkali	Good	
Anti-abrasion	Excellent	
Hydrolysis stability	Good	

Nomex needle-felt 550g/m² with PTFE membrane



3) Fiberglass woven 800g/m² with PTFE membrane

Product Name	Fiberglass woven cloth 800 gsm with PTFE membrane	
Product Code	ES-FB800W-TFM	
Physical properties		
Weave method	Double Twill	
Thickness (mm)	0.80±0.08	
Weight	g/m ²	800±25
Width	m	≤2.20
Loss on Ignition (%)	≥10	
Chemical Finish	PTFE impregnation, PTFE membrane	
Surface Finish:	ePTFE membrane	
	Variations in colour on this product do not affect product performance	
Air Permeability (L/m ² S@200Pa)	30-80	
Density (ROOT/INCH)	Warp	48±2
	Weft	40±2
Tensile Strength (N/25mm)	Warp	≥2200
	Weft	≥2000
Temperature		
Continuous temperature	°C	260
Instant temperature	°C	280

Fiberglass woven 800g/m2 with PTFE membrane



4) Fiberglass with polyester punch/needle felt 700/m2

Product Name	Fiberglass with polyester punch/needle felt 700/m2	
Product Code	ES-FBPE7000N	
Physical properties		
Fiber	100% polyester	
Scrim	Glassfiber Yarn	
Thickness (mm)	2.1	
Weight	g/m ²	700
Width	m	≤2.20
Loss on Ignition (%) 140°	≥1.5	
Chemical Finish		
Surface Finish:	Calendering, Singe, Heat setting	
Air Permeability (L/m ² S@200Pa)	200-400	
Tensile elongation %	Warp	<35
	Weft	<55
Tensile Strength	Warp	≥1100
	Weft	≥1700
Temperature		
Continuous temperature	°C	140
Instant temperature	°C	160

Fiberglass with polyester punch/needle felt 700/m2



5) P84 with PTFE membrane

Product Name	P84 with PTFE membrane	
Product Code	ES-P84TM	
Physical properties		
Fiber	100% P84fiber	
Thickness (mm)	2.0	
Weight	g/m ²	550
Width	m	≤2.20
Heat shrinkage (%) 250°	1.5	
Chemical Finish		
Surface Finish:	Calendering, Singe, Heat setting, PTFE membrane	
Air Permeability (L/m ² S@200Pa)	30-60	
Tensile elongation %	Warp	<20
	Weft	<40
Tensile Strength	Warp	≥800
	Weft	≥1400
Temperature		
Continuous temperature	°C	260
Instant temperature	°C	280

P84 with PTFE membrane



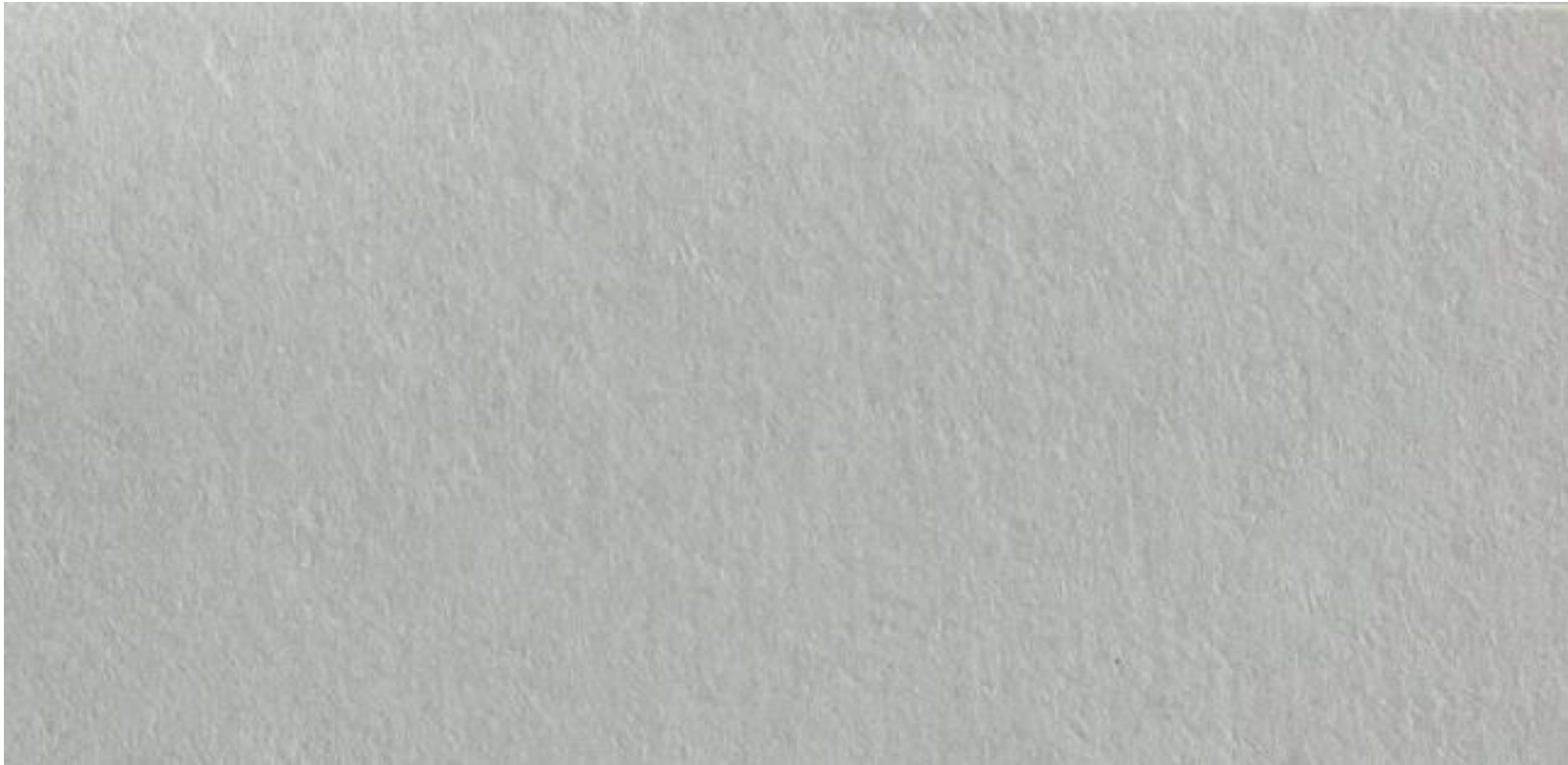
P84 without PTFE– color a bit different



6) 100% PTFE without PTFE membrane

Product Name	PTFE	
Product Code	ES-PTFE750	
Physical properties		
Fiber	PTFE	
Scrim	PTFE	
Thickness (mm)	0.9—1.0	
Weight	g/m ²	750
Width	m	≤2.20
Heat shrinkage (%) 250°	1.5	
Chemical Finish		
Surface Finish:	Heat setting	
Air Permeability (L/m ² S@200Pa)	100-150	
Tensile elongation %	Warp	<15
	Weft	<30
Tensile Strength	Warp	≥700
	Weft	≥800
Temperature		
Continuous temperature	°C	260
Instant temperature	°C	280

PTFE without PTFE membrane



7) 100% PTFE with PTFE membrane

Product Name	PTFE	
Product Code	ES-PTFE750	
Physical properties		
Fiber	PTFE	
Scrim	PTFE	
Thickness (mm)	0.9—1.0	
Weight	g/m ²	750
Width	m	≤2.20
Heat shrinkage (%) 250°	1.5	
Chemical Finish		
Surface Finish:	Heat setting, PTFE Membrane	
Air Permeability (L/m ² S@200Pa)	20-30	
Tensile elongation %	Warp	<15
	Weft	<30
Tensile Strength	Warp	≥700
	Weft	≥800
Temperature		
Continuous temperature	°C	260
Instant temperature	°C	280

PTFE with PTFE membrane



8) PPS needle-felt 500g/m²

Product name	PPS needle felt 550 g/m ²	
Product Code	ES-PPS500	
Physical properties		
Fiber	PPS staple fiber	
Scrim	PPS Yarn	
Weight	g/m ²	500
Thickness	mm	1,8
Width	M	≤2,2
Finish treatment	Singeing, Calendering, Heat setting, PTFE impregnation	
Air permeability	l / m ² / s @200pa	150 ~ 300
Tensile strength	Warp	1000
	Weft	1050
Tensile elongation	Warp	23
	Weft	30
Temperature		
Continuos temperature	C°	190
Instant temperature	C°	220
Chemical Properties		
Anti-acid	Excellent	
Anti-alkali	Middle	
Anti-abrasion	Excellent	
Hydrolysis stability	Middle	

PPS needle-felt 500g/m²



9) PPS +PTFE needle-felt 650g/m²

Product name	PPS PTFE needle felt 650g/m ²	
Product Code	ES-PPSPT650	
Physical properties		
Fiber	PPS staple fiber +PTFE fiber	
Scrim	PTFE	
Weight	g/m ²	650
Thickness	mm	1.6-1,8
Width	M	≤2,2
Finish treatment	Singeing, Calendering, Heat setting, PTFE dipping	
Air permeability	l / m ² / s @200pa	80~ 120
Tensile strength	Warp	>1100
	Weft	>900
Tensile elongation	Warp	<35
	Weft	<45
Temperature		
Continuos temperature	C°	190
Instant temperature	C°	220
Heat shrinkage (220 ° , %)	3	
Anti-acid	Excellent	
Anti-alkali	Middle	
Anti-abrasion	Excellent	
Hydrolysis stability	Middle	

PPS +PTFE needle-felt 650g/m2



Polypropylene Filter Bag Specifications



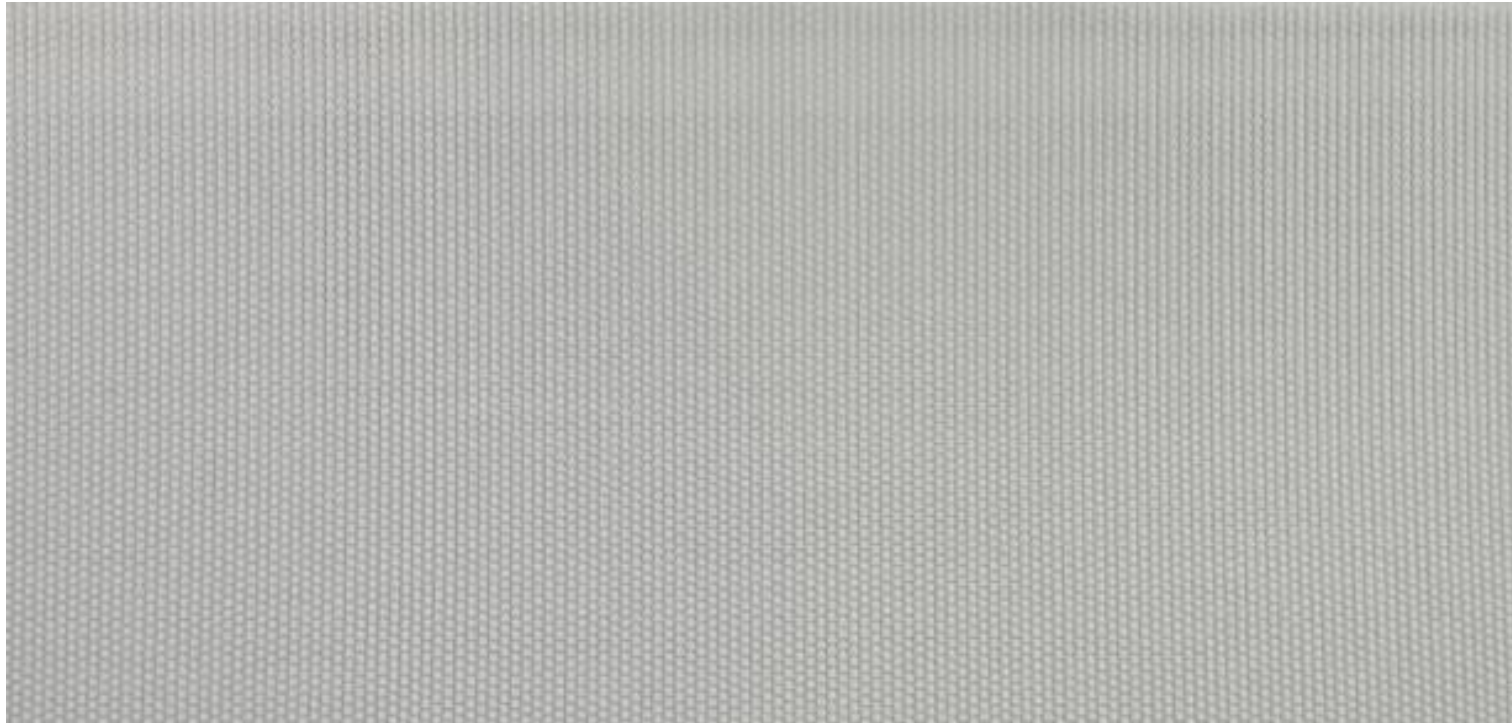
Polypropylene

280gsm

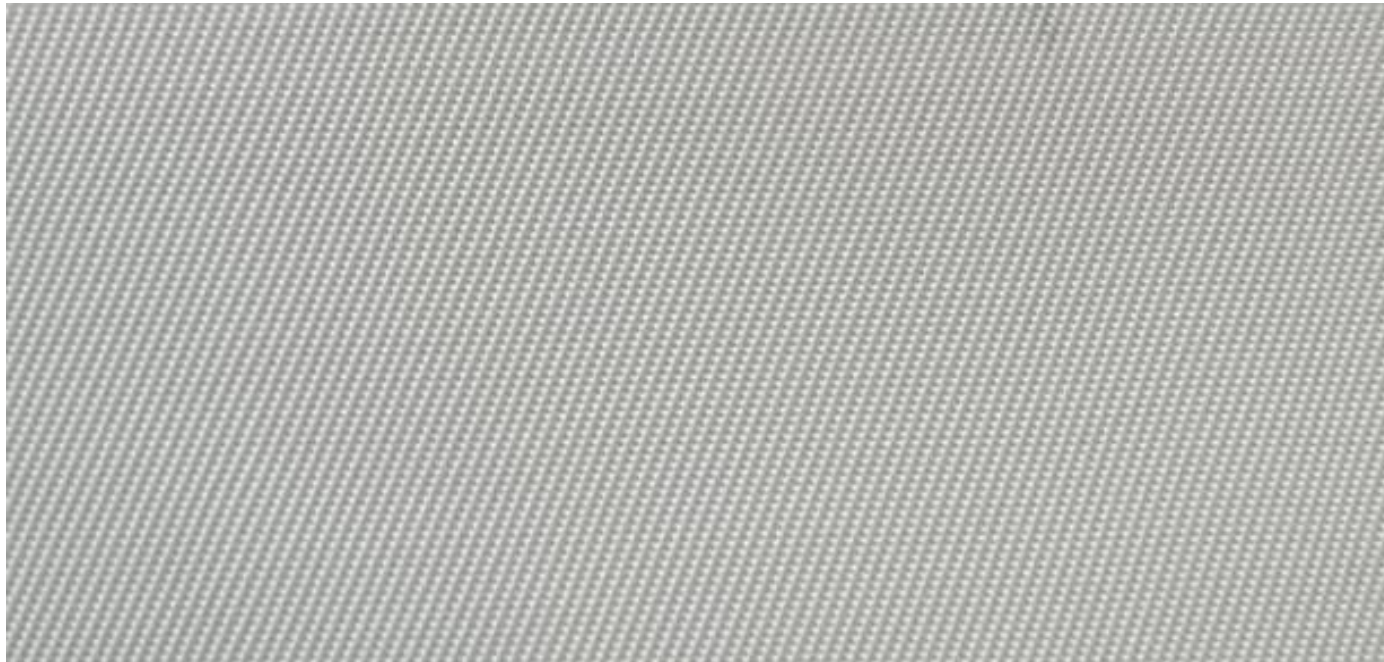
Polypropylene Monofilament Twill weave



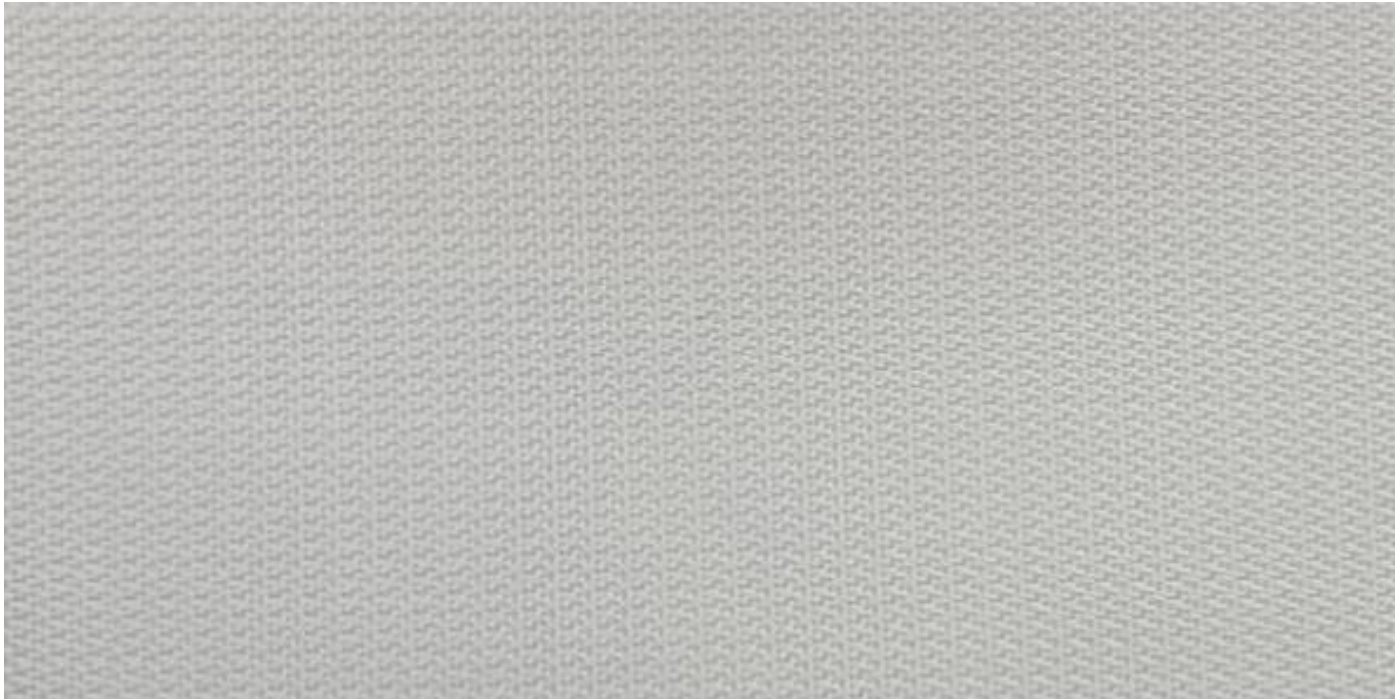
Polypropylene
360gsm
Polypropylene Plain weave



Polypropylene
400gsm
Polypropylene Twill weave



Polypropylene
600gsm
Polypropylene Twill weave



Polypropylene
335gsm
Polypropylene 3/8 Satin weave



Polypropylene
340gsm
Polypropylene Satin weave



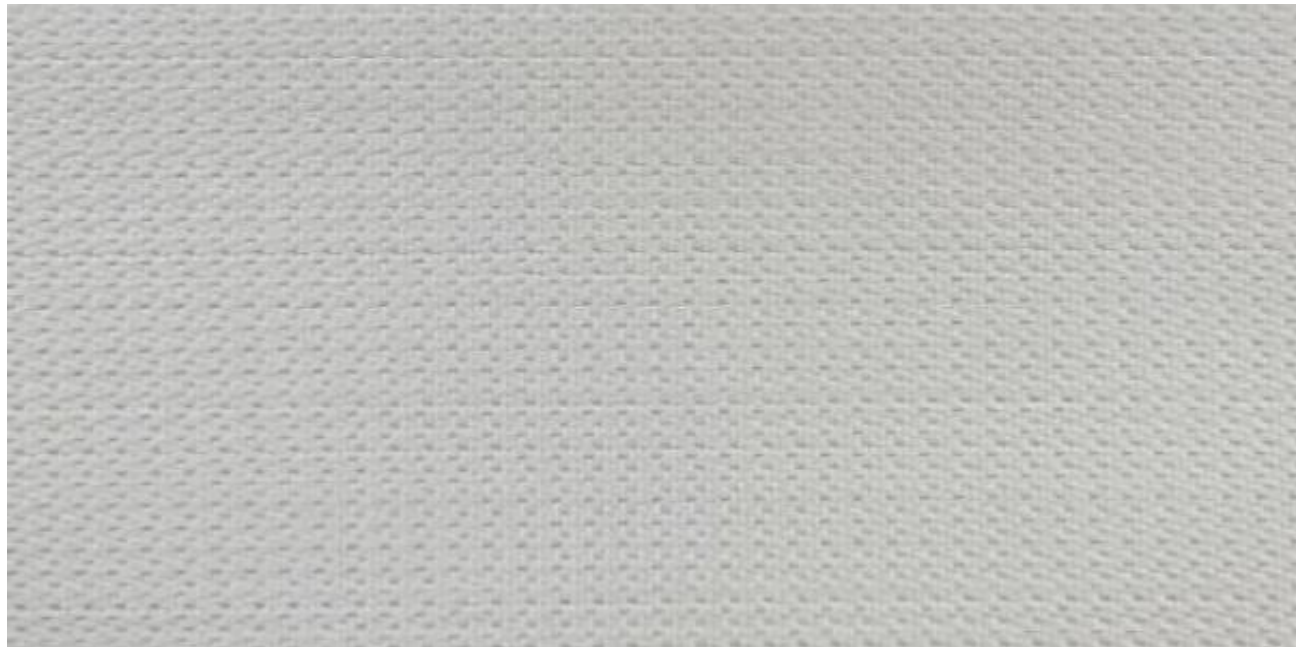
Polypropylene

305gsm

Polypropylene Monofilament Satin weave



Polypropylene
800gsm
Polypropylene Satin weave



Polyamide
400gsm
Polyamide Satin weave

